

## Standard and Optional Equipment

●=Std ○=Opt — = N/A

Category	Description	SK225SR-7	SK235SR-7	
Engine	YANMAR 4TN107TT (Tier3 certified)	●	●	
	Alternator 24 V / 80 A	●	●	
	Starter motor 24 V / 5 kW	●	●	
	Batteries 2 x 12 V (105 Ah)	●	●	
	Fan suction type cooling system	●	●	
	iNDR system	●	●	
	Auto deceleration function	●	●	
	Auto idle stop	●	●	
Hydraulic system	3 work modes H, S, Eco	●	●	
	Power boost (37.8 MPa)	●	●	
	Heavy lift mode	●	●	
	Independent travel function	●	●	
	Auto warm up system	●	●	
	Hydraulic oil VG46	●	○	
	Hydraulic oil VG68	○	○	
	Rotating & N&B piping	○	○	
Piping	N&B piping	●	●	
		●	●	
Cabin	Suspension seat with armrest	●	●	
	10 inch colour monitor	●	●	
	LED door light	●	●	
	Air-conditioner	●	●	
	Radio (FM/AM & AUX & USB & Bluetooth® & hands free telephone)	●	—	
	Harness for cab two lights	●	●	
	Intermittent windshield wiper	●	●	
	24 V power outlet	●	●	
	Rain visor	○	—	
	Lights	LED work lights ; 2 on boom, 1 on upper frame, 2 on rear counterweight	●	—
		LED work lights ; 1 on boom, 1 on upper frame, 2 on rear counterweight	—	●
LED work lights ; 2 on cab top front		○	○	
Working equipment	Standard boom (5.62 m)	●	—	
	Standard HD boom (5.65 m)	—	●	
	Standard arm (2.87 m)	●	—	
	Standard HD arm (2.94 m) with rock guard	—	●	
Counterweight	Standard CW (5,910 kg)	●	●	
	Standard CW (5,910 kg) + Additional CW (1,400 kg)	○	○	
Undercarriage	600 mm steel shoe	●	●	
	700 mm steel shoe	○	○	
	790 mm steel shoe	○	—	
	800 mm steel shoe	—	○	
	Track guide	●	●	
	Additional track guides	○	○	
	Lower frame guard	●	●	
	Dozer blade (2,800 mm) for 600 mm shoe	○	—	
	Dozer blade (2,990 mm) for 600 mm shoe	—	○	
		○	○	
Safety	Engine emergency stop switch	●	●	
	Pump emergency mode (KPSS release switch)	●	●	
	Emergency accel dial	●	●	
	ROPS compliant cab (ISO 12117-2:2008)	●	●	
	OPG Level II top guard (ISO 10262:1998)	●	●	
	OPG Level II front guard (ISO 10262:1998)	○	○	
	Eagle-eye view camera (Rear, Right, Left)	●	●	
	Seatbelt indicator on display	●	●	
	Travel alarm	○	○	
	Public address system	○	○	
		○	○	
Others	Harness for engine room light	●	●	
	RAL color	○	○	
	KOMEXS	●	●	

Note: Bluetooth® is a registered trademark of the Bluetooth SIG Inc.

Note: This catalogue may contain attachments and optional equipment that are not available in your area. And it may contain photographs of machines with specifications that differ from those of machines sold in your areas. Please consult your nearest KOBELCO distributor for those items you require. Specialist equipment is needed to use this machine in demolition work. Before using it please contact your KOBELCO dealer. Due to our policy of continuous product improvements all designs and specifications are subject to change without advance notice. Copyright by **KOBELCO CONSTRUCTION MACHINERY CO., LTD.** No part of this catalogue may be reproduced in any manner without notice.

### KOBELCO CONSTRUCTION MACHINERY CO., LTD.

5-15, Kitashinagawa 5-chome, Shinagawa-ku, Tokyo 141-8626 JAPAN  
 Tel: +81 (0) 3-5789-2146 Fax: +81 (0) 3-5789-2135  
 www.kobelcocm-global.com

Enquiries To:

SK225SR\_SK235SR-7\_HNK\_SEA-A\_1E\_2503

# SK225SR SK235SR

■ Bucket capacity:

0.51 – 0.93 m<sup>3</sup>

■ Engine power:

127 kW / 2,000 min<sup>-1</sup>

■ Operating weight:

23,000 – 26,700 kg





Performance  Design

With the release of the SK225SR/SK235SR, KOBELCO has completely harmonised the values of PERFORMANCE and DESIGN. The SK225SR/SK235SR delivers greater efficiency and productivity with increased power and speed, along with uncompromising operator comfort and machine operability.

In the pursuit of producing unique and unbeatable machines that provide comfort and productivity without equal, KOBELCO continues to rise to the challenge.

## THE ULTIMATE SLEEK AND STYLISH CAB DESIGN

True ergonomic functionality combined with modern design has resulted in a cabin interior that is sleek and comfortable, built for simplicity and operator comfort.

### Jog dial

The jog dial integrates multiple functions to allow for simple navigation of machine information screens, even while wearing gloves.

### LED Backlights

LED backlighting on switches and dials provides a bright, clear view of controls, even in the dark, while delivering a premium look and feel.





## UNFORGETTABLE COMFORT

### Air suspension seat

A GRAMMER\* seat is installed as standard equipment, which achieves excellent shock absorption and superior ride comfort.

\*GRAMMER is trademark of GRAMMER AG, registered in Germany and other countries.

### Optimal air conditioning vent placement

Air conditioning vents are optimally placed around the cabin with air flow directed toward the operator's neck and back, providing more comfortable operation.

### Ergonomic and low-effort pilot control levers

Pilot control levers are mounted on adjustable consoles, with an ergonomic design that allows movement without twisting, reducing operator fatigue.



### New Hydraulic Control

Our newly upgraded hydraulic control system responds to shorter lever strokes than current models, delivering swifter, more precise movement and improved lever operability.

### LED door light

The LED interior light automatically turns on when the door is opened or when the ignition is set to OFF. This ensures easy entry and exit at nighttime.





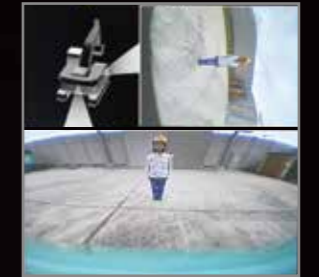
## A WIDER VIEW BRINGS A WIDER RANGE OF USE

### 10-inch colour monitor—the largest in the industry

The easy-to-operate menu screen facilitates easy reading and navigation. Images from the built-in cameras can be checked on the large screen, which helps to improve safety. In addition, each icon is easily recognisable.



The right camera and rear camera (right side view mode)



The right camera and rear camera (straight view mode)

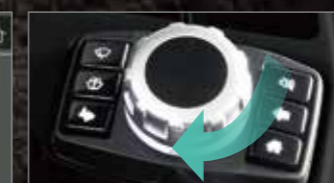


The right camera and rear camera (straight view mode)



### Safety on full display

Our high-resolution, large display shows right, left and rear side cameras together. Multiple camera modes allow operators to customise their display based on their needs to enhance awareness and jobsite safety.



### Screen display linked with the jog dial operation

The jog dial provides simple and intuitive control of all display screens. Turn the jog dial to the right or left to select an item and press the dial to confirm the selection.

## IDEAL FOR URBAN WORK SITES WITH A WIDE WORKING RANGE

### Minimal swing radius improves efficiency

The tail of the upper body extends very little past the crawlers, so the operator can concentrate on the job at hand. This also reduces the risk of collision damage.

### Easy workability even in Close Quarters

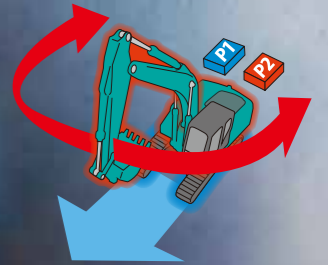
The compact design allows continuous 180° dig, and load operations within a working space of just 4.05m (SK225SR) / 3.68m (SK235SR).



Figures above show the value for standard boom and standard arm spec.  
\* For SK225SR \*\* For SK235SR

### Independent Travel

Selecting Independent Travel dedicates one hydraulic pump to travel and one to the attachment on a continuous basis, allowing for a smooth and constant movement speed even while swinging or using the boom or attachment. With Independent Travel, safely carrying a large pipe across a job site is a breeze.



## THE NEXT LEVEL OF PERFORMANCE

### Our high-power engine complies with Tier 3 emissions regulations

Compared to previous models, engine output is significantly increased, which shortens cycle times substantially, while enabling greater breakout force for improved digging productivity.

The efficient engine complies with Tier 3 emissions standards, with no DPF and no additional requirement for AdBlue®.



Model: YANMAR 4TN107TT

Engine output

**127 kW/2,000 min<sup>-1</sup>**



## GREATER MULTI-FUNCTION CAPABILITIES

### Attachment mode

The flow-rate modes of the bucket, breaker, nibbler, and rotating grapple are set before delivery, which allows you to start operating immediately.

Mode settings for other attachments, such as the tilt rotator, can easily be added or changed.



## CONVENIENT AND FUNCTIONAL EQUIPMENT



Rear camera



Right camera



Left camera

Standard Rear, Left and Right Side Cameras



Seatbelt Unfastened Indicator On Monitor



### Engine start password

A password is required when starting the engine for greater security.



### Wiper adjustment function

In addition to the intermittent wiper mode and continuous wiper mode, the one-time wiper mode was added.



### Console mount

The console-integrated seat allows for comfortable operation.



### AM/FM Bluetooth® (hands-free) radio

Audio streaming and hands-free phone calling capability.



### USB port/12 V power outlet



### Smartphone holder

You can use the holder with your smartphone connected to the USB port.



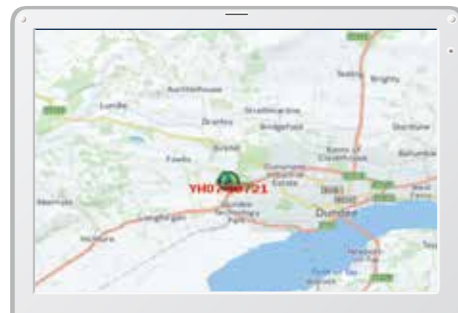
### Remote Monitoring for Peace of Mind

KOMEXS (Kobelco Monitoring Excavator System) uses satellite communication and internet to relay data, and therefore can be deployed in areas where other forms of communication are difficult. When a hydraulic excavator is fitted with this system, data on the machine's operation, such as operating hours, location, fuel consumption, and maintenance status can be obtained remotely.

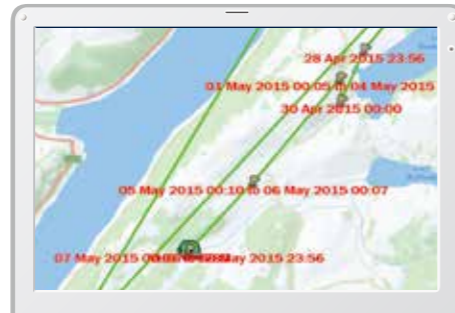
### Direct Access to Operational Status

#### Location Data

• Accurate location data can be obtained even from sites where communications are difficult.



Latest location



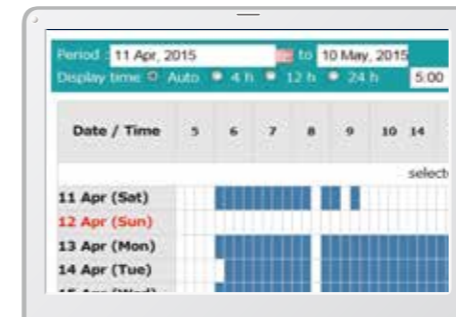
Location records



Work data

### Operating Hours

- A comparison of operating times of machines at multiple locations shows which locations are busier and more profitable.
- Operating hours on site can be accurately recorded, for running time calculations needed for rental machines, etc.



Daily report

### Fuel Consumption Data

- Data on fuel consumption and idling times can be used to indicate improvements in fuel consumption.

Work mode	Working Hrs	Total Fuel Consumption
H mode	2:06	24.5 L
S mode	0:00	0.0 L
E mode	169:19	1489.7 L
<b>TOTAL</b>	<b>171:25</b>	<b>1514.2 L</b>

Fuel consumption

### Graph of Work Content

- The graph shows how working hours are divided among different operating categories, including digging, idling, travelling and optional operations.



Work status

### Maintenance Data and Warning Alerts

#### Machine Maintenance Data

- Provides maintenance status of separate machines operating at multiple sites.
- Maintenance data is also relayed to KOBELCO service personnel, for more efficient planning of periodic servicing.

Model	Serial No.	Hour Meter	Engine Oil
SK135SRLC-3/SK140SRL	YH07-09721	734 Hr	434
SK135SRLC-3/SK140SRL	YH07-09789	73 Hr	429
SK210LC-9	YQ13-10454	960 Hr	58
SK210LC-9	YQ13-10481	549 Hr	498
SK75SR-	YT08-30174		

Maintenance

#### Warning Alerts

- This system warns an alert if an anomaly is sensed, preventing damage that could result in machine downtime.

### Alarm Information Can Be Received through E-mail

- Alarm information or maintenance notice can be received through E-mail, using a computer or cell phone.



Alarm messages can be received on mobile device.

### Daily/Monthly Reports

- Operational data downloaded onto a computer helps in formulating daily and monthly reports.

### Security System

#### Engine Start Alarm

- The system can be set an alarm if the machine is operated outside designated time.



Engine start alarm outside prescribed work time

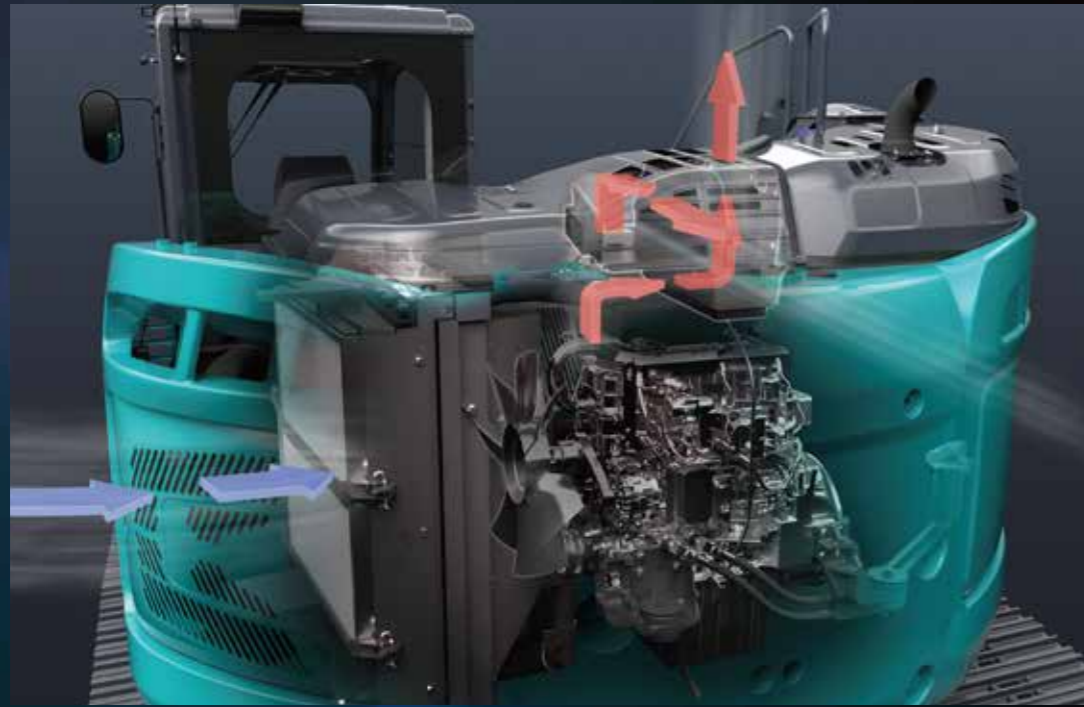
#### Area Alarm

- It can be set an alarm if the machine is moved out of its designated area to another location.



Alarm for outside of reset area

## NON-STOP OPERATION BY iNDr

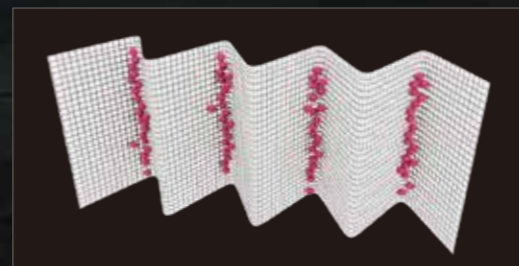


### Ultimate low noise

KOBELCO's exclusive iNDr Cooling System delivers amazingly quiet operation.

### iNDr Filter

A high-density mesh filter blocks dust intruding during air intake. This prevents the cooling device and the air cleaner from clogging with dust and maintains their performances. The ridges of the corrugated filter allow the air to pass through, and the grooves collect the dust, which prevents the filter from clogging.



The iNDr filter has a high-density mesh of 30 lines per inch to collect dust.

## EASY MAINTENANCE



### Standard Overhead Top Guard Level II

The standard overhead cab guard can be tilted open with gas damper for easy window cleaning. Meets standard top guard level II requirements. (ISO 10262)



### Two-Stage Air Filter



### Left Side (Radiator and Cooling System Elements)

Laid out for easy access to radiator and cooling system with clean out screen.



### Right Side (Ground Level Maintenance)

Hydraulic pump and engine filter compartment.



### Engine Oil Filter



### Pre-Filter with Integrated Water Separator



### Fuel Filter

Photographs of machines may with differ from those of machines sold in your areas.

# Specifications

## Engine

Model	YANMAR 4TN107TT
Type	Four-cycle, water-cooled, direct injection diesel engine, turbo charged, Tier 3 exhaust emission regulation
No. of cylinders	4
Bore and stroke	107 mm x 127 mm
Displacement	4.567 L
Rated power output	122 kW / 2000 min <sup>-1</sup> (ISO 9249 : with fan) 127 kW / 2000 min <sup>-1</sup> (ISO 14396: without fan)
Max. torque	791 N·m / 1500 min <sup>-1</sup> (ISO 9249 : with fan) 805 N·m / 1500 min <sup>-1</sup> (ISO 14396: without fan)

## Hydraulic system

Pump	
Type	Two variable displacement axial piston pumps + extra gear pump + pilot gear pump
Max. discharge flow	2 x 220 L/min, 1 x 40.6 L/min, 1 x 20 L/min
Relief valve setting	
Boom, arm and bucket	34.3 MPa
Power Boost	37.8 MPa
Travel circuit	34.3 MPa
Swingcircuit	SK225SR 29.0 MPa SK235SR 28.4 MPa
Control circuit	5.0 MPa
Pilot control pump	Gear type
Main control valve	8-Spool valve
Oil cooler	Air cooled type

## Swing system

Model	SK225SR	SK235SR
Swing motor	One fixed displacement piston motor	
Brake	Hydraulic; locking automatically when the swing control lever is in the neutral position	
Parking brake	Wet multiple plate	
Swing speed	12.6 min <sup>-1</sup>	10.2 min <sup>-1</sup>
Swing torque	73.0 kN·m	87.7 kN·m

## Attachments

Backhoe bucket and combination

Use	Backhoe bucket							
	Normal digging							
Bucket capacity	ISO Heaped	m <sup>3</sup>	0.51	0.70	0.80	0.80	0.93	0.93
	Struck	m <sup>3</sup>	0.39	0.50	0.59	0.59	0.67	0.67
Opening width	With side cutters	mm	870	1,080	1,160	1,160	1,330	1,330
	Without side cutters	mm	770	980	1,060	1,060	1,230	1,230
No. of bucket teeth			3	5	5	5	5	5
Bucket weight		kg	520	630	660	660	720	720
Combinations	SK235SR-7 2.94 m HD standard arm [for Singapore]		—	—	—	⊙	—	○
	SK225SR-7 2.87 m standard arm [for Singapore]		—	—	—	—	—	⊙
	SK235SR-7 2.94 m HD standard arm [for Hong Kong]		○	○	○	—	⊙	—
	SK225SR-7 2.87 m standard arm [for Hong Kong]		○	○	⊙	—	○	—

⊙ Standard ○ Recommended — Not applicable

## Travel system

Model	SK225SR	SK235SR
Travel motors	2 x axial-piston, two-step motors	
Travel brakes	Hydraulic brake per motor	
Parking brakes	Oil disc brake per motor	
Travel shoes	46 each side	47 each side
Travel speed	5.8 / 3.5 km/h	5.2 / 3.2 km/h
Drawbar pulling force	227 kN (SAE J 1309)	244 kN (SAE J 1309)
Gradeability	70% {35°}	

## Cab & control

Cab
All-weather, sound-suppressed steel cab mounted on the high suspension mounts filled with silicone oil and equipped with a heavy, insulated floor mat.
Control
Two hand levers and two foot pedals for travel
Two hand levers for excavating and swing
Electric rotary-type engine throttle

## Cylinders

Model	SK225SR	SK235SR
Boom cylinders	120 mm x 1,355 mm	125 mm x 1,320 mm
Arm cylinder	130 mm x 1,406 mm	135 mm x 1,558 mm
Bucket cylinder	110 mm x 1,064 mm	120 mm x 1,080 mm
Dozer cylinders	140 mm x 200 mm	

## Refilling capacities & lubrications

Model	SK225SR	SK235SR
Fuel tank	330 L	
Cooling system	23.0 L	
Engine oil	23.1 L	
Travel reduction gear	2 x 4.5 L	
Swing reduction gear	2.7 L	5.0 L
Hydraulic oil tank	114 L tank oil level 230 L hydraulic system	

## Working ranges

Unit: mm

Model	SK225SR	SK235SR
Boom	5.62 m	5.65 m
Range	Standard 2.87 m	Standard 2.94 m
a- Max. digging reach	9,700	9,850
b- Max. digging reach at ground level	9,530	9,680
c- Max. digging depth	6,580	6,650
d- Max. digging height	10,580	11,210
e- Max. dumping clearance	7,710	8,330
f- Min. dumping clearance	2,980	3,140
g- Max. vertical wall digging depth	5,950	6,060
h- Min. swing radius	2,370	1,960
i- Horizontal digging stroke at ground level	5,030	5,270
j- Digging depth for 2.4 m (8') flat bottom	6,370	6,470
Bucket capacity ISO heaped m <sup>3</sup>	0.80	0.80

Unit: kN

Model	SK225SR	SK235SR
Arm length	Standard 2.87 m	Standard 2.94 m
Bucket digging force	120 132*	143 157*
Arm crowding force	88.0 96.8*	102 112*

\*Power Boost engaged.

## Dimensions

Unit: mm

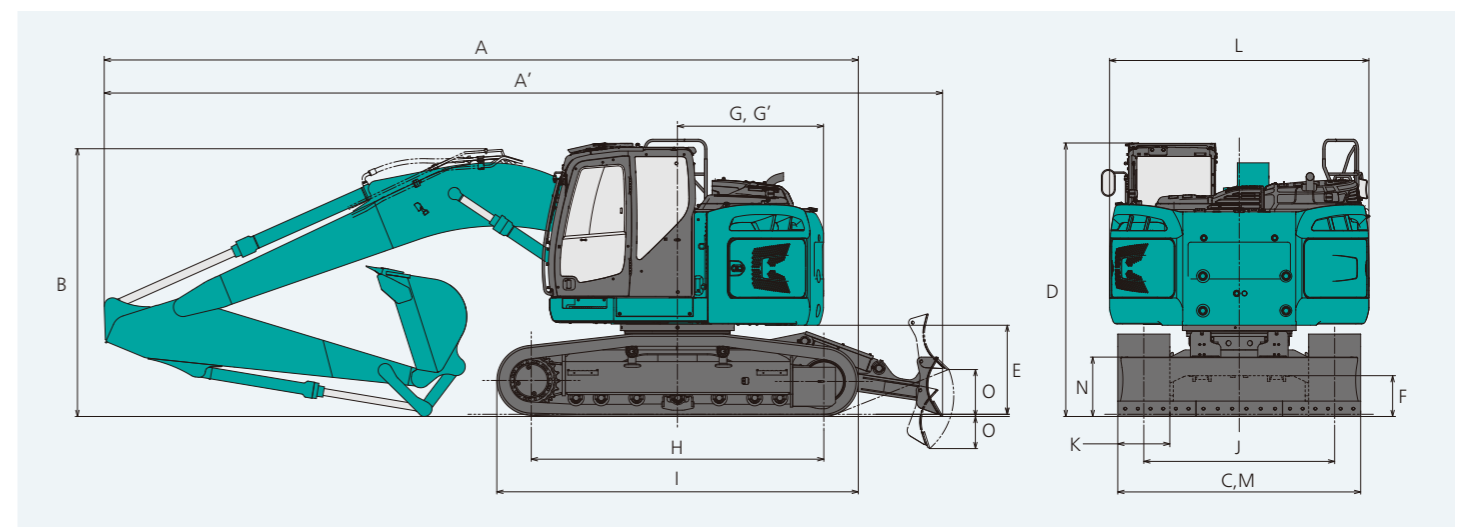
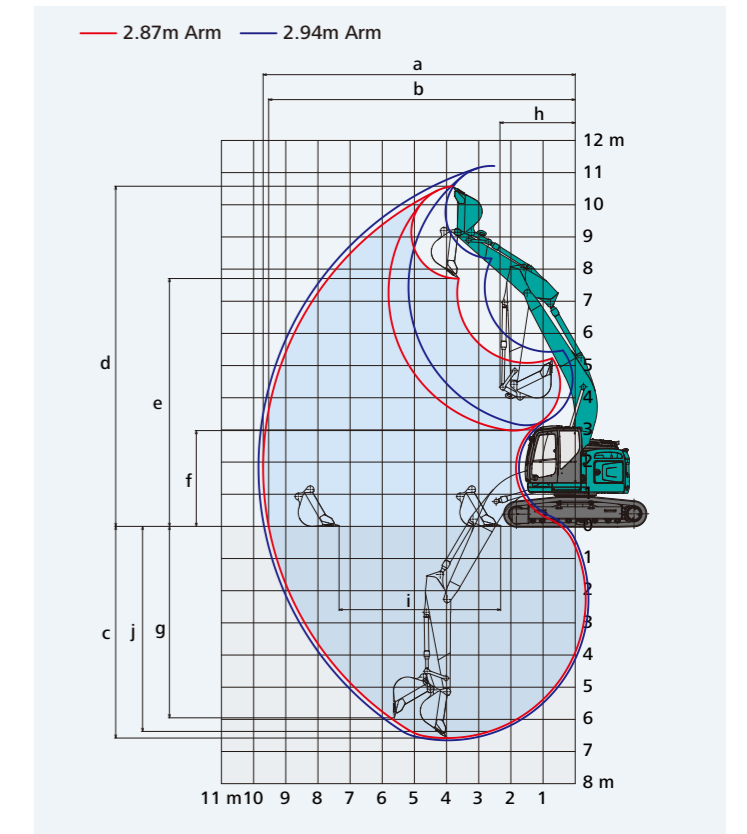
Model	SK225SR	SK235SR
Boom	5.62 m	5.65 m
Arm length	Standard 2.87 m	Standard 2.94 m
A Overall length	8,690	8,780
A' Overall length (with dozer blade)	9,670	9,730
B Overall height (to top of boom)	3,090	3,060
C Overall width	2,800	2,990
D Overall height (to top of cab)	3,150	3,180
E Ground clearance of rear end*	1,030	1,050
F Ground clearance*	380 {425***}	390 {440***}
G Tail swing radius {additional counterweight}	1,680 {1,840**}	1,720 {1,880**}

G' Distance from centre of swing to rear end {additional counterweight}	1,680 {1,840**}	1,720 {1,880**}
H Tumbler distance	3,370	3,470
I Overall length of crawler	4,170	4,260
J Track gauge	2,200	2,390
K Shoe width	600	
L Overall width of upper structure	2,990	
M Dozer blade width	2,800	2,990
N Dozer blade height	685	685
O Dozer blade (up/down)	540/370	555/355

\*Without including height of shoe lug  
\*\*Standard counterweight + additional counterweight 1,400 kg  
\*\*\*Without dozer blade

# SK225SR SK235SR

SK225SR-7 SK235SR-7



# Operating weight & ground pressure

## SK225SR

In standard trim, with standard boom, 2.87 m arm, and 0.80 m<sup>3</sup> ISO heaped bucket, standard counterweight

Shaped		Triple grouser shoes (even height)			
Shoe width	mm	600	700	790	800
Overall width of crawler	mm	2,800	2,900	2,990	—
Ground pressure	2.87 m standard arm [for Singapore]	kPa	51.7	45.1	40.3
	2.87 m standard arm [for Hong Kong]	kPa	51.5	45.1	40.3
Operation weight	2.87 m standard arm [for Singapore]	kg	23,100	23,500	23,700
	2.87 m standard arm [for Hong Kong]	kg	23,000	23,500	23,700

In standard trim, with standard boom, 2.87 m arm, and 0.80 m<sup>3</sup> ISO heaped bucket, standard counterweight + additional counterweight

Shaped		Triple grouser shoes (even height)			
Shoe width	mm	600	700	790	800
Overall width of crawler	mm	2,800	2,900	2,990	—
Ground pressure	2.87 m standard arm [for Singapore]	kPa	54.9	47.8	42.7
	2.87 m standard arm [for Hong Kong]	kPa	54.6	47.8	42.7
Operation weight	2.87 m standard arm [for Singapore]	kg	24,500	24,900	25,100
	2.87 m standard arm [for Hong Kong]	kg	24,400	24,900	25,100

## SK235SR

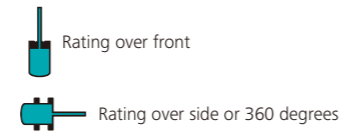
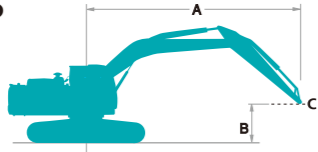
In standard trim, with standard boom, 2.94 m HD arm, and 0.80 m<sup>3</sup> ISO heaped bucket, standard counterweight

Shaped		Triple grouser shoes (even height)			
Shoe width	mm	600	700	790	800
Overall width of crawler	mm	2,990	3,090	—	3,190
Ground pressure	2.94 m HD arm [for Singapore]	kPa	54.1	—	—
	2.94 m HD arm [for Hong Kong]	kPa	54.1	46.8	41.4
Operation weight	2.94 m HD arm [for Singapore]	kg	24,800	—	—
	2.94 m HD arm [for Hong Kong]	kg	24,800	25,000	25,300

In standard trim, with standard boom, 2.94 m HD arm, and 0.80 m<sup>3</sup> ISO heaped bucket, standard counterweight + additional counterweight

Shaped		Triple grouser shoes (even height)			
Shoe width	mm	600	700	790	800
Overall width of crawler	mm	2,990	3,090	—	3,190
Ground pressure	2.94 m HD arm [for Singapore]	kPa	—	—	—
	2.94 m HD arm [for Hong Kong]	kPa	57.2	49.4	43.7
Operation weight	2.94 m HD arm [for Singapore]	kg	—	—	—
	2.94 m HD arm [for Hong Kong]	kg	26,200	26,400	26,700

# Lift capacities



A - Reach from swing centerline to arm top  
 B - Arm top height above/below ground  
 C - Lift point  
 Relief valve setting: 37.8 MPa

SK225SR		Boom: 5.62 m Arm: 2.87 m Bucket: without Counterweight: 5,910 kg Shoe: 600 mm (Heavy Lift)												
B	A	1.5 m		3.0 m		4.5 m		6.0 m		7.5 m		At max. reach		
		Rating over front	Rating over side or 360 degrees	Rating over front	Rating over side or 360 degrees	Rating over front	Rating over side or 360 degrees	Rating over front	Rating over side or 360 degrees	Rating over front	Rating over side or 360 degrees	Rating over front	Rating over side or 360 degrees	Radius
9.0 m	kg											*3,920	*3,920	3.99 m
7.5 m	kg					*5,310	*5,310					*3,200	*3,200	5.97 m
6.0 m	kg					*5,790	*5,790	*5,330	4,390			*2,980	*2,980	7.11 m
4.5 m	kg			*9,230	*9,230	*7,750	6,640	*6,550	4,230	*4,250	2,940	*2,940	2,730	7.81 m
3.0 m	kg					*9,380	6,090	6,350	3,990	4,490	2,840	*3,030	2,460	8.18 m
1.5 m	kg					9,490	5,590	6,080	3,750	4,360	2,720	*3,250	2,360	8.25 m
G.L.	kg			*6,420	*6,420	9,170	5,320	5,890	3,580	4,270	2,640	*3,650	2,390	8.05 m
-1.5 m	kg	*6,660	*6,660	*10,550	9,960	9,090	5,250	5,820	3,520	4,250	2,620	4,220	2,600	7.55 m
-3.0 m	kg	*10,920	*10,920	*12,200	10,160	*9,140	5,320	5,870	3,570			5,070	3,120	6.67 m
-4.5 m	kg			*8,120	*8,120	*6,170	5,560					*4,950	4,510	5.24 m

SK235SR		Boom: 5.65 m Arm: 2.94 m Bucket: without Counterweight: 5,910 kg Shoe: 600 mm (Heavy Lift)																
B	A	1.5 m		3.0 m		4.5 m		6.0 m		7.5 m		At max. reach						
		Rating over front	Rating over side or 360 degrees	Rating over front	Rating over side or 360 degrees	Rating over front	Rating over side or 360 degrees	Rating over front	Rating over side or 360 degrees	Rating over front	Rating over side or 360 degrees	Rating over front	Rating over side or 360 degrees	Radius				
9.0 m	kg													*5,200	*5,200	4.35 m		
7.5 m	kg							*6,730	*6,730	*5,120	5,070			*4,270	*4,270	6.20 m		
6.0 m	kg							*7,000	*7,000	*6,350	5,070			*3,950	3,570	7.30 m		
4.5 m	kg							*10,100	*10,100	*8,130	7,730	*6,790	4,880	5,010	3,370	*3,870	3,010	7.97 m
3.0 m	kg							*11,240	*11,240	*9,660	7,080	6,940	4,590	4,880	3,250	*3,940	2,720	8.32 m
1.5 m	kg									10,430	6,490	6,630	4,310	4,730	3,110	3,980	2,610	8.40 m
G.L.	kg					*6,640	*6,640	10,050	6,160	6,410	4,110	4,620	3,010	4,070	2,660			8.19 m
-1.5 m	kg	*6,750	*6,750	*11,340	*11,340	9,940	6,070	6,320	4,030	4,600	2,990	4,440	2,890					7.70 m
-3.0 m	kg	*11,820	*11,820	*11,260	*11,260	*8,610	6,150	6,370	4,080							*5,030	3,450	6.84 m
-4.5 m	kg					*7,040	*7,040	*5,500	*5,500							*3,990	*3,990	5.45 m

SK225SR		Boom: 5.62 m Arm: 2.87 m Bucket: without Counterweight: 5,910 kg Shoe: 600 mm Dozer: blade up (Heavy Lift)												
B	A	1.5 m		3.0 m		4.5 m		6.0 m		7.5 m		At max. reach		
		Rating over front	Rating over side or 360 degrees	Rating over front	Rating over side or 360 degrees	Rating over front	Rating over side or 360 degrees	Rating over front	Rating over side or 360 degrees	Rating over front	Rating over side or 360 degrees	Rating over front	Rating over side or 360 degrees	Radius
9.0 m	kg											*3,920	*3,920	3.99 m
7.5 m	kg					*5,310	*5,310					*3,200	*3,200	5.97 m
6.0 m	kg					*5,790	*5,790	*5,330	4,680			*2,980	*2,980	7.11 m
4.5 m	kg			*9,230	*9,230	*7,750	7,060	*6,550	4,520	*4,250	3,150	*2,940	2,940	7.81 m
3.0 m	kg					*9,380	6,500	6,450	4,270	4,570	3,050	*3,030	2,660	8.18 m
1.5 m	kg					9,660	6,000	6,190	4,040	4,440	2,940	*3,250	2,550	8.25 m
G.L.	kg			*6,420	*6,420	9,340	5,730	6,000	3,870	4,350	2,860	*3,650	2,590	8.05 m
-1.5 m	kg	*6,660	*6,660	*10,550	*10,550	9,260	5,660	5,930	3,800	4,330	2,840	4,290	2,820	7.55 m
-3.0 m	kg	*10,920	*10,920	*12,200	10,920	*9,140	5,730	5,980	3,850			5,160	3,370	6.67 m
-4.5 m	kg			*8,120	*8,120	*6,170	5,970					*4,950	4,850	5.24 m

SK235SR		Boom: 5.65 m Arm: 2.94 m Bucket: without Counterweight: 5,910 kg Shoe: 600 mm Dozer: blade up (Heavy Lift)																
B	A	1.5 m		3.0 m		4.5 m		6.0 m		7.5 m		At max. reach						
		Rating over front	Rating over side or 360 degrees	Rating over front	Rating over side or 360 degrees	Rating over front	Rating over side or 360 degrees	Rating over front	Rating over side or 360 degrees	Rating over front	Rating over side or 360 degrees	Rating over front	Rating over side or 360 degrees	Radius				
9.0 m	kg													*5,200	*5,200	4.35 m		
7.5 m	kg							*6,730	*6,730	*5,120	*5,120			*4,270	*4,270	6.20 m		
6.0 m	kg							*7,000	*7,000	*6,350	5,390			*3,950	3,820	7.30 m		
4.5 m	kg							*10,100	*10,100	*8,130	*8,130	*6,790	5,190	5,090	3,610	*3,870	3,230	7.97 m
3.0 m	kg							*11,240	*11,240	*9,660	7,540	7,050	4,910	4,960	3,490	*3,940	2,940	8.32 m
1.5 m	kg									10,600	6,950	6,740	4,630	4,810	3,350	4,050	2,820	8.40 m
G.L.	kg					*6,640	*6,640	10,220	6,630	6,520	4,430	4,700	3,250	4,140	2,870			8.19 m
-1.5 m	kg	*6,750	*6,750	*11,340	*11,340	10,110	6,540	6,430	4,350	4,680	3,230	4,520	3,120					7.70 m
-3.0 m	kg	*11,820	*11,820	*11,260	*11,260	*8,610	6,610	*6,390	4,390							*5,030	3,720	6.84 m
-4.5 m	kg					*7,040	*7,040	*5,500	*5,500							*3,990	*3,990	5.45 m

SK225SR		Boom: 5.62 m Arm: 2.87 m Bucket: without Counterweight: 5,910 kg + 1,400 kg Shoe: 600 mm (Heavy Lift)												
B	A	1.5 m		3.0 m		4.5 m		6.0 m		7.5 m		At max. reach		
		Rating over front	Rating over side or 360 degrees	Rating over front	Rating over side or 360 degrees	Rating over front	Rating over side or 360 degrees	Rating over front	Rating over side or 360 degrees	Rating over front	Rating over side or 360 degrees	Rating over front	Rating over side or 360 degrees	Radius
9.0 m	kg											*3,920	*3,920	3.99 m
7.5 m	kg					*5,310	*5,310					*3,200	*3,200	5.97 m
6.0 m	kg					*5,790	*5,790	*5,330	5,030			*2,980	*2,980	7.11 m
4.5 m	kg			*9,230	*9,230	*7,750	7,560	*6,550	4,870	*4,250	3,420	*2,940	*2,940	7.81 m
3.0 m	kg					*9,380	7,010	7,180	4,620	5,100	3,320	*3,030	2,900	8.18 m
1.5 m	kg					*10,720	6,510	6,910	4,390	4,980	3,210	*3,250	2,790	8.25 m
G.L.	kg			*6,420	*6,420	10,450	6,240	6,730	4,220	4,890	3,120	*3,650	2,840	8.05 m
-1.5 m	kg	*6,660	*6,660	*10,550	*10,550	10,370	6,170	6,650	4,150	4,870	3,110	*4,390	3,080	7.55 m
-3.0 m	kg	*10,920	*10,920	*12,200	11,850	*9,140	6,240	6,710	4,200			*5,700	3,670	6.67 m
-4.5 m	kg			*8,120	*8,120	*6,170	*6,170					*4,950	*4,950	5.24 m

SK235SR		Boom: 5.65 m Arm: 2.94 m Bucket: without Counterweight: 5,910 kg + 1,400 kg Shoe: 600 mm (Heavy Lift)																
B	A	1.5 m		3.0 m		4.5 m		6.0 m		7.5 m		At max. reach						
		Rating over front	Rating over side or 360 degrees	Rating over front	Rating over side or 360 degrees	Rating over front	Rating over side or 360 degrees	Rating over front	Rating over side or 360 degrees	Rating over front	Rating over side or 360 degrees	Rating over front	Rating over side or 360 degrees	Radius				
9.0 m	kg													*5,200	*5,200	4.35 m		
7.5 m	kg							*6,730	*6,730	*5,120	*5,120			*4,270	*4,270	6.20 m		
6.0 m	kg							*7,000	*7,000	*6,350	5,750			*3,950	*3,950	7.30 m		
4.5 m	kg							*10,100	*10,100	*8,130	*8,130	*6,790	5,550	5,650	3,880	*3,870	3,480	7.97 m
3.0 m	kg							*11,240	*11,240	*9,660	8,070	*7,440	5,270	5,520	3,760	*3,940	3,180	8.32 m
1.5 m	kg									*10,820	7,480	7,490	4,980	5,370	3,620	*4,170	3,060	8.40 m
G.L.	kg					*6,640	*6,640	*11,020	7,150	7,270	4,790	5,260	3,520	*4,610	3,120			8.19 m
-1.5 m	kg	*6,750	*6,750	*11,340	*11,340	*10,280	7,060	7,180	4,700	5,230	3,500	5,060	3,390					7.70 m
-3.0 m	kg	*11,820	*11,820	*11,260	*11,260	*8,610	7,140	*6,390	4,750							*5,030	4,020	6.84 m
-4.5 m	kg					*7,040	*7,040	*5,500	*5,500							*3,990	*3,990	5.45 m

SK225SR		Boom: 5.62 m Arm: 2.87 m Bucket: without Counterweight: 5,910 kg + 1,400 kg Shoe: 600 mm Dozer: blade up (Heavy Lift)												
B	A	1.5 m		3.0 m		4.5 m		6.0 m		7.5 m		At max. reach		
		Rating over front	Rating over side or 360 degrees	Rating over front	Rating over side or 360 degrees	Rating over front	Rating over side or 360 degrees	Rating over front	Rating over side or 360 degrees	Rating over front	Rating over side or 360 degrees	Rating over front	Rating over side or 360 degrees	Radius
9.0 m	kg											*3,920	*3,920	3.99 m
7.5 m	kg					*5,310	*5,310					*3,200	*3,200	5.97 m
6.0 m	kg					*5,790	*5,790	*5,330	5,310			*2,980	*2,980	7.11 m
4.5 m	kg			*9,230	*9,230	*7,750	*7,750	*6,550	5,150	*4,250	3,640	*2,940	*2,940	7.81 m
3.0 m	kg					*9,380	7,420	*7,260	4,910	5,180	3,540	*3,030	*3,030	8.18 m
1.5 m	kg					*10,720	6,930	7,020	4,670	5,060	3,420	*3,250	2,980	8.25 m
G.L.	kg			*6,420	*6,420	10,620	6,660	6,830	4,500	4,970	3,340	*3,650	3,040	8.05 m
-1.5 m	kg	*6,660	*6,660	*10,550	*10,550	10,530	6,590	6,760	4,440	*4,940	3,330	*4,390	3,300	7.55 m
-3.0 m	kg	*10,920	*10,920											