

# KOBELCO

## SK210<sub>LC</sub>

■ 50 ft

Max. Digging Reach: 15,820 mm Digging Depth: 12,010 mm

■ 60 ft

Max. Digging Reach: 18,180 mm Digging Depth: 14,110 mm

## SK260<sub>LC</sub>

■ 60 ft

Max. Digging Reach: 18,530 mm Digging Depth: 14,730 mm

### LONG REACH ATTACHMENT

## Reaches Further and Deeper with Smooth, Stable Power

- Ideally suited to dredging, leveling, and other long reach operations.
- Extra-long crawlers ensure stability.
- Fuel-efficient diesel engine provides plenty of digging power.

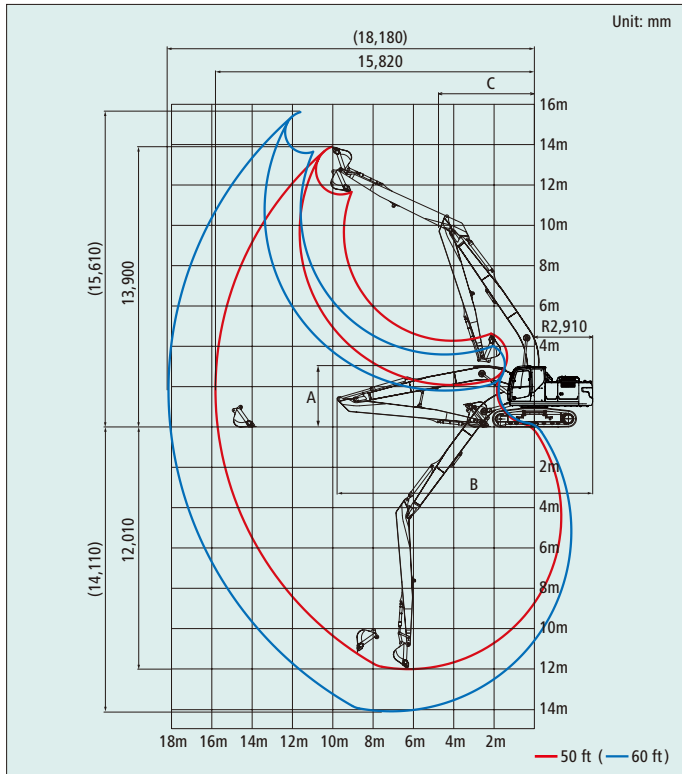


**We Save You Fuel**  
Achieving a Low-Carbon Society

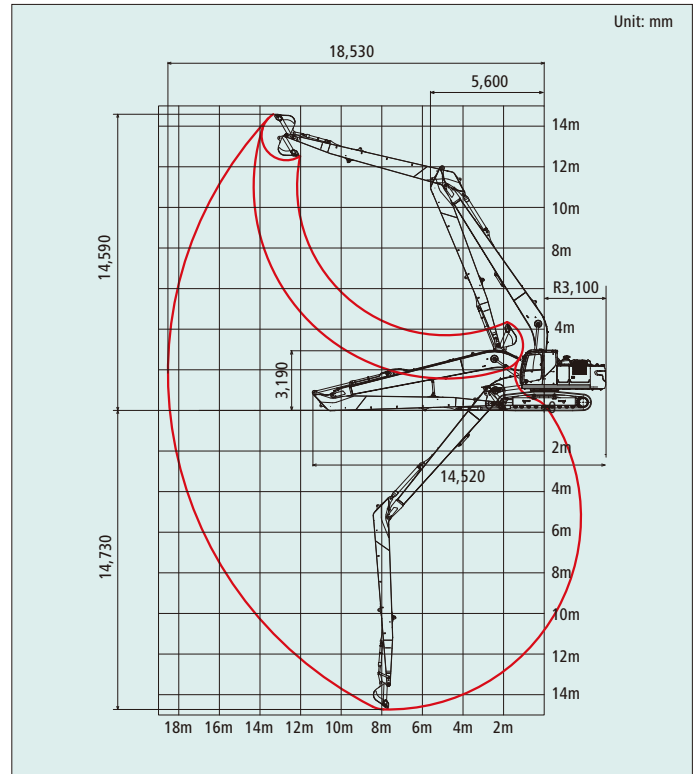
# LONG REACH ATTACHMENT

## WORKING RANGES

**SK210<sub>LC</sub>**



**SK260<sub>LC</sub>**



## MAIN SPECIFICATIONS

| Model                      | SK210LC           |         |        |         | SK260LC    |         |        |
|----------------------------|-------------------|---------|--------|---------|------------|---------|--------|
|                            | SK210LC-10        |         |        |         | SK260LC-10 |         |        |
| Type                       | 50 ft             |         |        |         | 60 ft      |         |        |
| Long reach attachment      | 50 ft             |         |        |         | 60 ft      |         |        |
| Bucket capacity ISO heaped | m <sup>3</sup>    | 0.45    |        | 0.27    |            | 0.4     |        |
| Shoe width                 | mm                | 600     | 800    | 600     | 800        | 600     | 800    |
| Operating weight           | kg                | 22,800  | 23,400 | 24,200  | 24,900     | 27,000  | 27,600 |
| Ground pressure            | kPa               | 47      | 37     | 50      | 39         | 53      | 41     |
| Swing speed                | min <sup>-1</sup> | 13.3    |        | 7.0     |            | 10.8    |        |
| Travel speed               | km/h              | 6.0/3.6 |        | 6.0/3.6 |            | 6.1/3.8 |        |
| Gradeability               | % (°)             | 70 (35) |        | 70 (35) |            | 70 (35) |        |
| Boom length                | mm                | 8,750   |        | 9,900   |            | 10,350  |        |
| Arm length                 | mm                | 6,350   |        | 7,900   |            | 8,250   |        |
| Overall height (A)         | mm                | 3,120   |        | 3,190   |            | 3,190   |        |
| Overall length (B)         | mm                | 12,690  |        | 13,860  |            | 14,520  |        |
| Min. swing radius (C)      | mm                | 4,720   |        | 5,170   |            | 5,600   |        |

Note: This catalog may contain attachments and optional equipment that are not available in your area. And it may contain photographs of machines with specifications that differ from those of machines sold in your areas. Please consult your nearest KOBELCO distributor for those items you require. Due to our policy of continuous product improvements all designs and specifications are subject to change without advance notice. Copyright by **KOBELCO CONSTRUCTION MACHINERY CO., LTD.** No part of this catalog may be reproduced in any manner without notice.

### KOBELCO CONSTRUCTION MACHINERY CO., LTD.

5-15 kitashinagawa 5-chome, Shinagawa-ku, Tokyo 141-8626 JAPAN  
Tel: +81 (0) 3-5789-2146 Fax: +81 (0) 3-5789-2135  
[www.kobelco-kenki.co.jp/english\\_index.html](http://www.kobelco-kenki.co.jp/english_index.html)

Inquiries To: